



**ELECTRONIC COPY**

## LABORATORY GROWN DIAMOND REPORT

February 24, 2024	
IGI Report Number	LG622491720
Description	LABORATORY GROWN DIAMOND
Shape and Cutting Style	ROUND BRILLIANT
Measurements	9.33 - 9.35 X 5.73 MM
<b>GRADING RESULTS</b>	
Carat Weight	3.10 CARATS
Color Grade	G
Clarity Grade	VS 2
Cut Grade	IDEAL

### ADDITIONAL GRADING INFORMATION

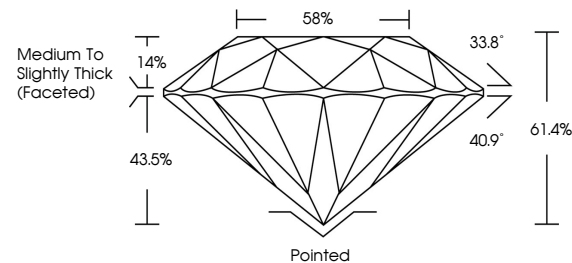
Polish	EXCELLENT
Symmetry	EXCELLENT
Fluorescence	NONE
Inscription(s)	LG622491720

Comments: This Laboratory Grown Diamond was created by Chemical Vapor Deposition (CVD) growth process and may include post-growth treatment.  
Type IIa

## LABORATORY GROWN DIAMOND REPORT

LG622491720  
Report verification at [igi.org](https://igi.org)

## PROPORTIONS



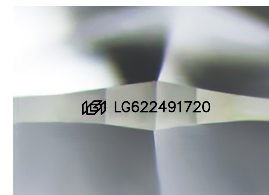
## GRADING SCALES

## CLARITY

IF	VVS <sup>1-2</sup>	VS <sup>1-2</sup>	SI <sup>1-2</sup>	I <sup>1-3</sup>
Internally Flawless	Very Very Slightly Included	Very Slightly Included	Slightly Included	Included

**COLOR**

D E F G H I J Faint Very Light Light



Sample Image Used



© IGI 2020, International Gemological Institute

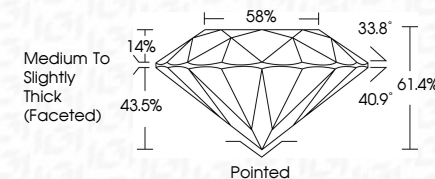
FD - 10 20

**www.igi.org**

LABORATORY GROWN  
DIAMOND REPORT

## LABORATORY GROWN DIAMOND REPORT

February 24, 2024	
IGI Report Number	LG622491720
Description	LABORATORY GROWN DIAMOND
Shape and Cutting Style	ROUND BRILLIANT
Measurements	9.33 - 9.35 X 5.73 MM
GRADING RESULTS	
Carat Weight	3.10 CARATS
Color Grade	G
Clarity Grade	VS 2
Cut Grade	IDEAL



### ADDITIONAL GRADING INFORMATION

Polish	EXCELLENT
Symmetry	EXCELLENT
Fluorescence	NONE
Inscription(s)	(15) LG622491720

Comments: This Laboratory Grown Diamond was created by Chemical Vapor Deposition (CVD) growth process and may include post-growth treatment.  
Type IIa



February 24, 2024	
GL Report No. LG5222491720	
ROUND BRILLIANT	
33 - 33 - 3.35 X 5.73 MM	
Carat Weight	3.10 CARATS
Color Grade	G
Clarity Grade	VS 2
Cut Grade	IDEAL
Depth	61.4%
Table	65%
Girdle	Medium to Slightly Thick (Faceted)
Culet	Pointed
Polish	EXCELLENT
Symmetry	EXCELLENT
Fluorescence	NONE
Inscriptions(s)	lg51 LG5222491720
Comments:	
	This Laboratory Grown Diamond was created by Chemical Vapor Deposition and may include post-growth treatment.
	Type IIG