

ELECTRONIC COPY

LABORATORY GROWN DIAMOND REPORT

January 5, 2024	
IGI Report Number	LG612326926
Description	LABORATORY GROWN DIAMOND
Shape and Cutting Style	ROUND BRILLIANT
Measurements	8.63 - 8.65 X 5.38 MM

GRADING RESULTS

Carat Weight	2.51 CARATS
Color Grade	F
Clarity Grade	VS 1
Cut Grade	EXCELLENT

ADDITIONAL GRADING INFORMATION

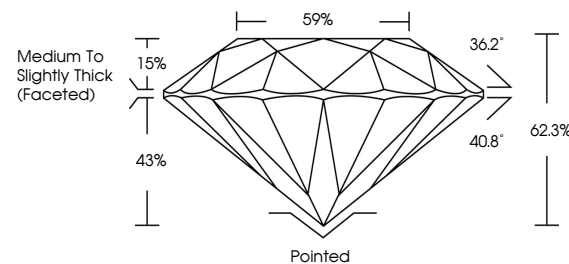
Polish	EXCELLENT
Symmetry	EXCELLENT
Fluorescence	NONE
Inscription(s)	 LG612326926

Comments: This Laboratory Grown Diamond was created by Chemical Vapor Deposition (CVD) growth process and may include post-growth treatment.
Type IIa

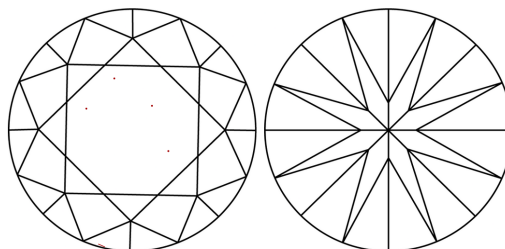
LABORATORY GROWN DIAMOND REPORT

LG612326926
Report verification at igi.org

PROPORTIONS



CLARITY CHARACTERISTICS



KEY TO SYMBOLS

Red symbols indicate internal characteristics.
Green symbols indicate external characteristics.

LABORATORY GROWN
DIAMOND REPORT

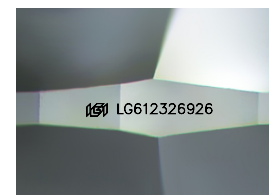
GRADING SCALES

CLARITY

IF	VVS ¹⁻²	VS ¹⁻²	SI ¹⁻²	I ¹⁻³
Internally Flawless	Very Very Slightly Included	Very Slightly Included	Slightly Included	Included

COLOR

D E F G H I J Faint Very Light Light



Sample Image Used

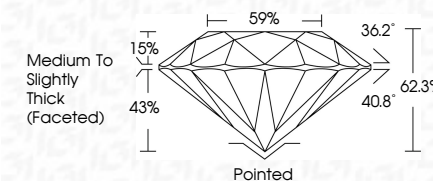


© IGI 2020, International Gemological Institute


FD - 10 20



January 5, 2024	
IGI Report Number	LG612326926
Description	LABORATORY GROWN DIAMOND
Shape and Cutting Style	ROUND BRILLIANT
Measurements	8.63 - 8.65 X 5.38 MM
GRADING RESULTS	
Carat Weight	2.51 CARATS
Color Grade	F
Clarity Grade	VS 1
Cut Grade	EXCELLENT



ADDITIONAL GRADING INFORMATION

Polish	EXCELLENT
Symmetry	EXCELLENT
Fluorescence	NONE
Inscription(s)	 LG612326926
<p>Comments: This Laboratory Grown Diamond was created by Chemical Vapor Deposition (CVD) growth process and may include post-growth treatment.</p> <p>Type IIa</p>	

January 5, 2024	GI Report No 12612324926	ROUND BRILLIANT	2.51 CARATS	F	VS 1	EXCELLENT	62.9%	59%	Medium to slightly Thick (faceted)	Pointed	EXCELLENT	EXCELLENT	NONE	161 L6412324926
			Carat Weight	Color Grade	Clarity Grade	Depth	Table	Girdle		Culet	Polish	Symmetry	Fluorescence	Inscriptions(s)
			1.63 - 1.65 X 5.39 MM											
Comments: This is a Natural Growth Diamond was created by Chemical Vapor Deposition (CVD) growth process and may include post-growth treatment. Type IIa														